

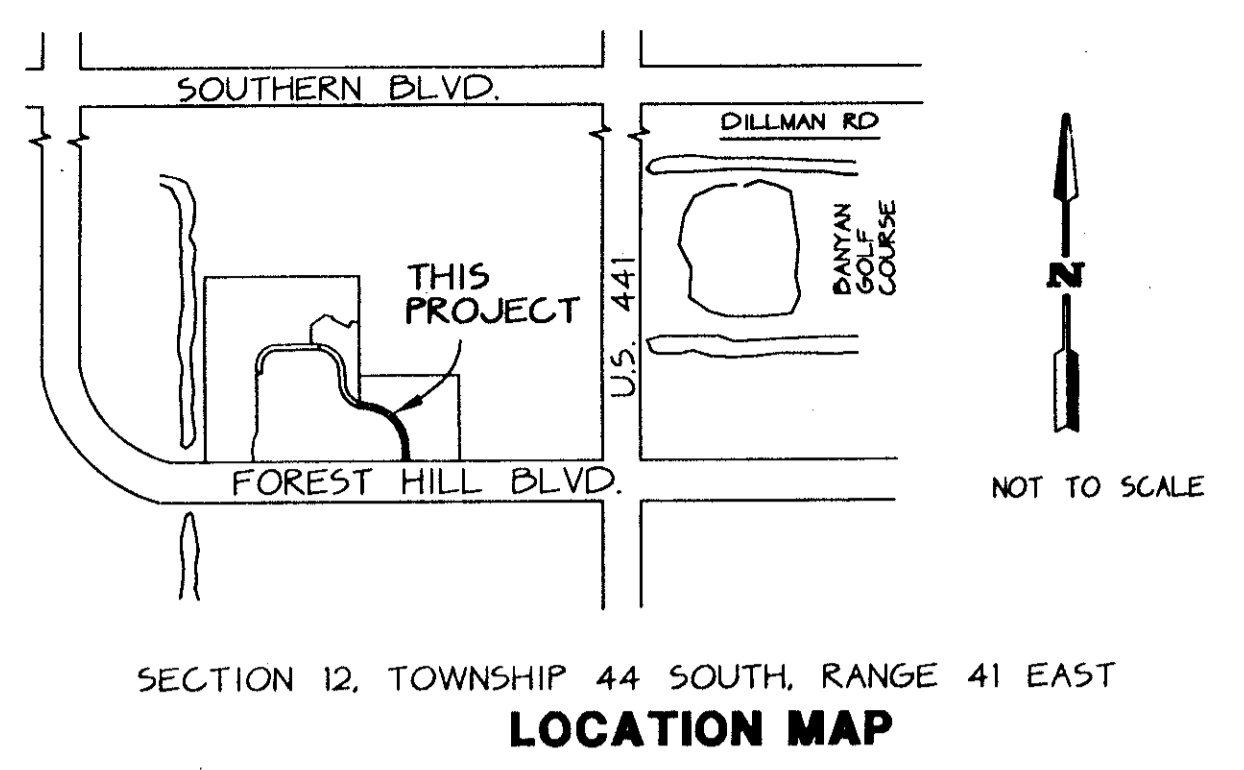
WELLINGTON'S EDGE BOULEVARD - PARCEL 79, A P.U.D.

10

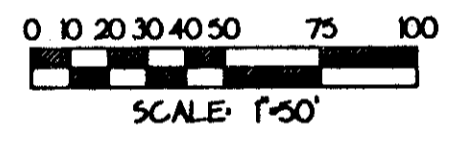
A PORTION OF TRACTS 24 AND 25, BLOCK 18, PALM BEACH FARMS COMPANY PLAT NO. 3, AS RECORDED IN PLAT BOOK 2, PAGES 45 THROUGH 54 INCLUSIVE OF THE PUBLIC RECORDS OF PALM BEACH COUNTY, FLORIDA AND A PORTION OF SECTION 12, TOWNSHIP 44 SOUTH, RANGE 41 EAST, VILLAGE OF WELLINGTON, PALM BEACH COUNTY, FLORIDA

THIS INSTRUMENT PREPARED BY JAMES E. PARK, P.L.S.
WILLIAMS, HATFIELD & STONER, INC. - ENGINEERS PLANNERS SURVEYORS
1901 SOUTH CONGRESS AVENUE, SUITE 150, BOYNTON BEACH, FLORIDA 33426

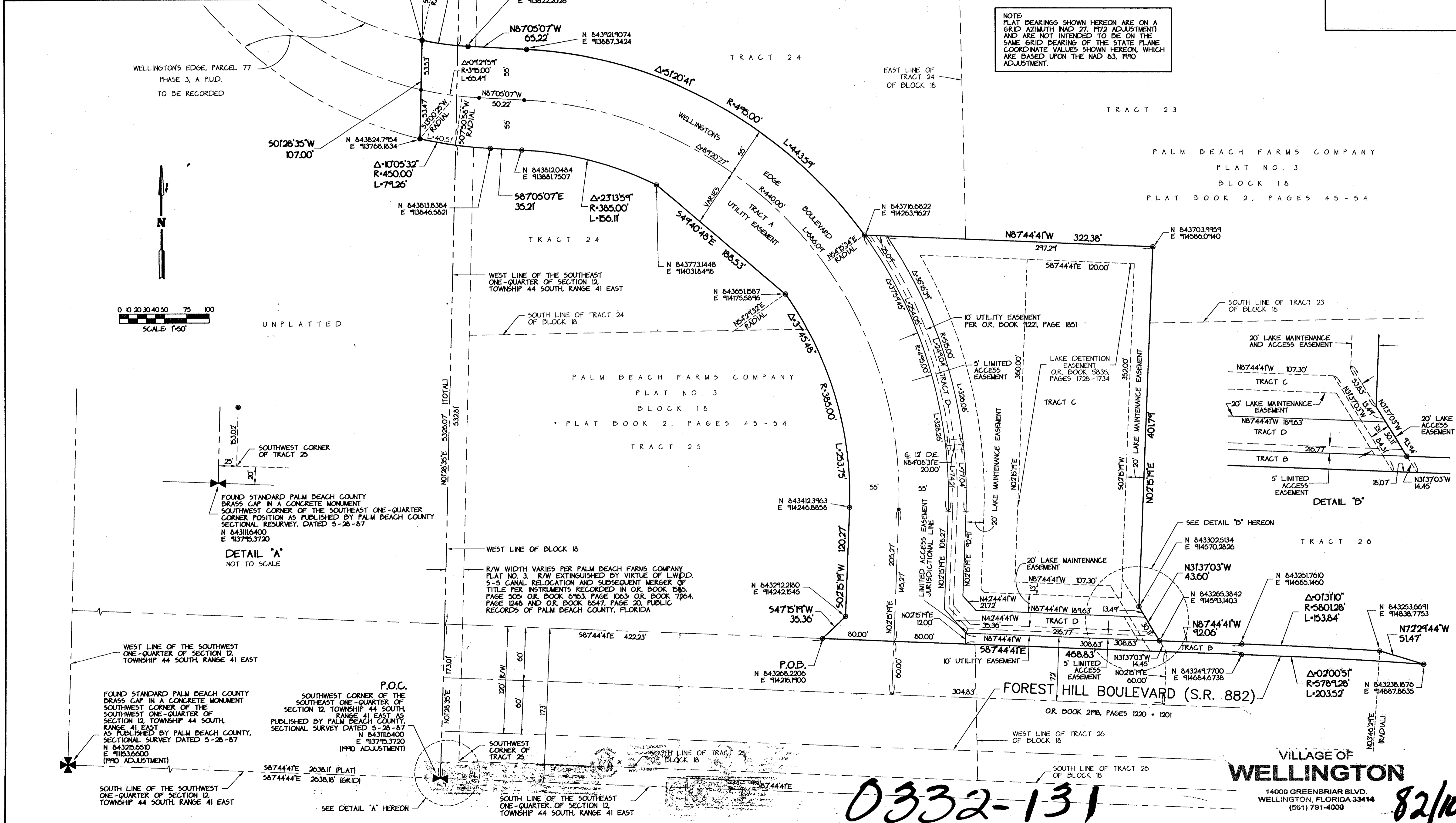
SHEET 3 OF 3



NOTE: BEARINGS SHOWN HEREON ARE ON A GRID AZIMUTH (NAD 83) ADJUSTMENT AND ARE NOT INTENDED TO BE ON THE SAME GRID BEARING OF THE STATE PLANE COORDINATE VALUES SHOWN HEREON WHICH ARE BASED UPON THE NAD 83, 1990 ADJUSTMENT.



BOOK 82
PAGE 10
FLOOD ZONE 4
IGNING RT/SLISE
ZIP CODE 33412
RUD NAME Wellington Blvd



DETAIL "A"
NOT TO SCALE

DETAIL "B"

0332-131

VILLAGE OF WELLINGTON

14000 GREENBRIAR BLVD.
WELLINGTON, FLORIDA 33414
(561) 791-4000

82/10